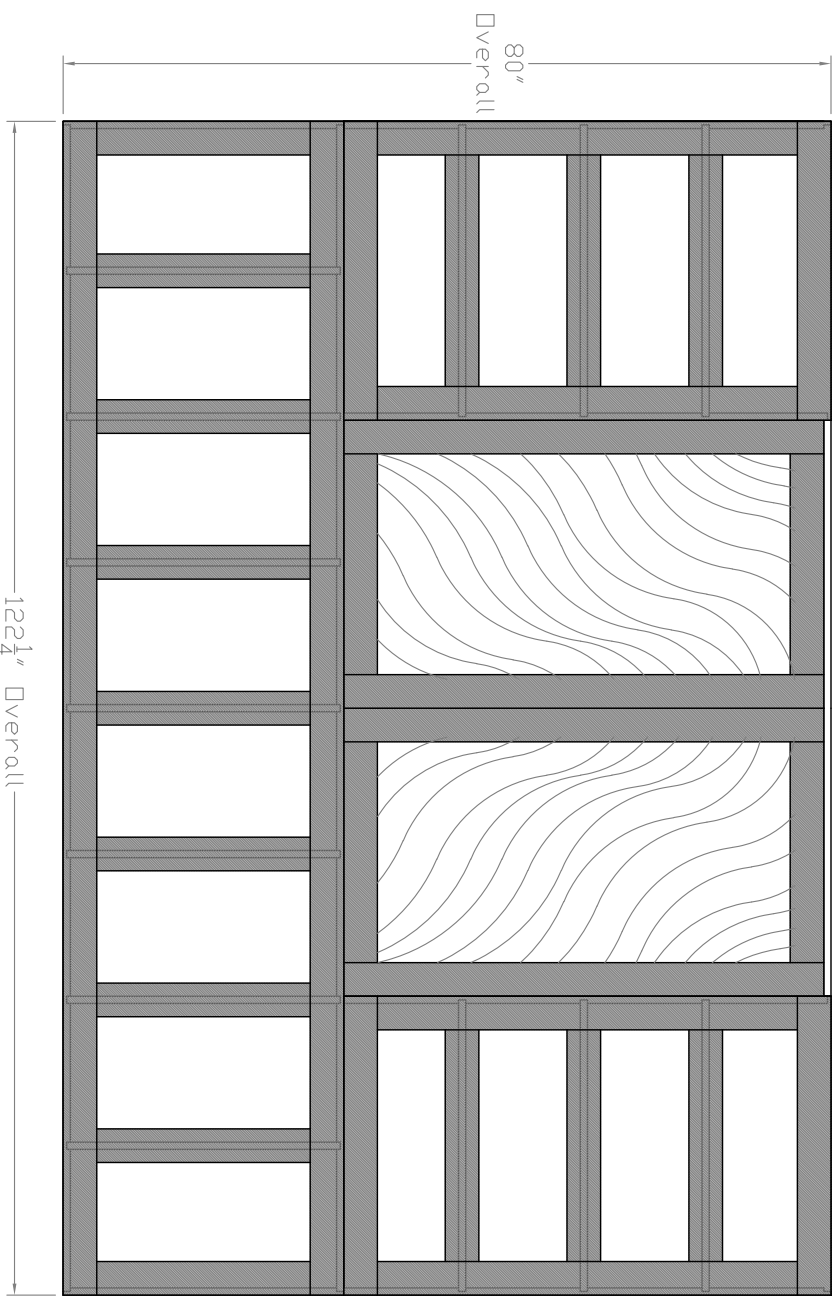


Line Item(s): ?

Qty: ?

Notes:
3/4" Cherry S4S,
Doors & Faceplate Shown.

Baird Bros.
Cherry Entertainment Center



Notes:
See Pg. 2 For Unit Without
Doors Or Faceplates.
See Pg. 3 For Bottom Unit.
See Pg. 5 For Side Units.
See Pg. 7 For Top Plate.
See Pg. 8 For Doors.

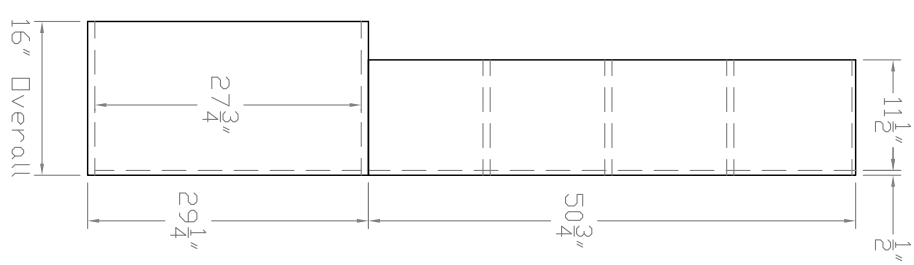
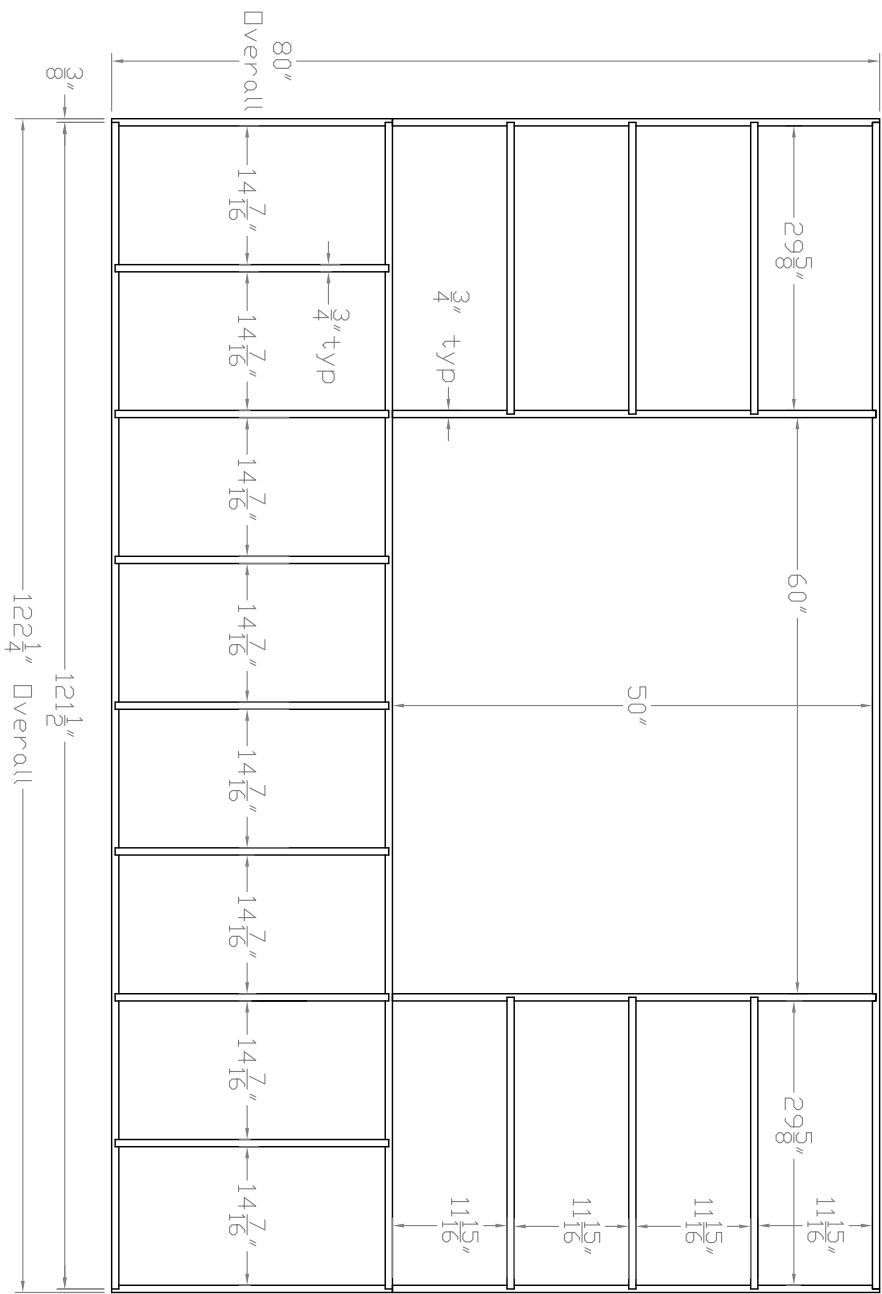
Baird Brothers Fine Hardwoods
 Baird Brothers Sawmill Inc. www.BairdBrothers.com
 7060 Croy Rd. Canfield, OH 44406
 (330) 533-3122 (800) 732-1697

DATE:	9/28/18	DRAWN BY:	BPT	SHEET:	1 OF 8
SCALE:	1:20	REV		REV DATE:	
DRAWING #:	Bertolini				
THIS DRAWING IS PROPERTY OF BAIRD BROTHERS SAWMILL INC.					

Line Item(s) : ?

Qty: ?

Baird Bros.
Cherry Entertainment Center



Notes:
 3/4" Cherry Plywood.
 Shown Without Doors & Faceplate.



Baird Brothers Fine Hardwoods
 Baird Brothers Sawmill Inc. www.BairdBrothers.com
 7060 Croy Rd. Canfield, OH 44406
 (330) 533-3122 (800) 732-1697

DATE: 9/28/18	DRAWN BY: BPT	SHEET: 2 of 8
SCALE: 1:20	REV	REV BY:
DRAWING #: Bertolini	REV DATE	THIS DRAWING IS PROPERTY OF BAIRD BROTHERS SAWMILL INC.

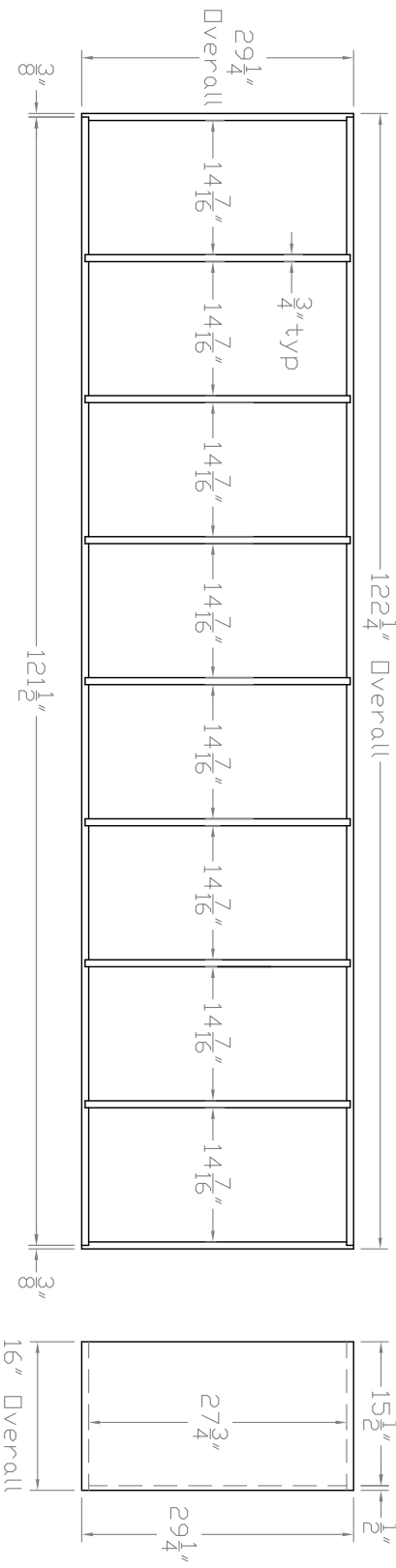
Line Item(s): ?

Qty: ?

Baird Bros.
Cherry Bottom Section

Notes:

- 3/4" Cherry S4S.
- 3/4" Wide x 3/8" Deep Dado Construction.
- Rabbet Back Side For 1/2" Back Plate.
- 1/2" x 120-3/4" x 28-1/2" Cherry Backplate (3/8" W x 1/2" Deep Rabbet).
- See Pg.4 For Faceplate.



Baird Brothers Fine Hardwoods
 Baird Brothers Sawmill Inc. www.BairdBrothers.com
 7060 Croy Rd. Canfield, OH 44406
 (330) 533-3122 (800) 732-1697

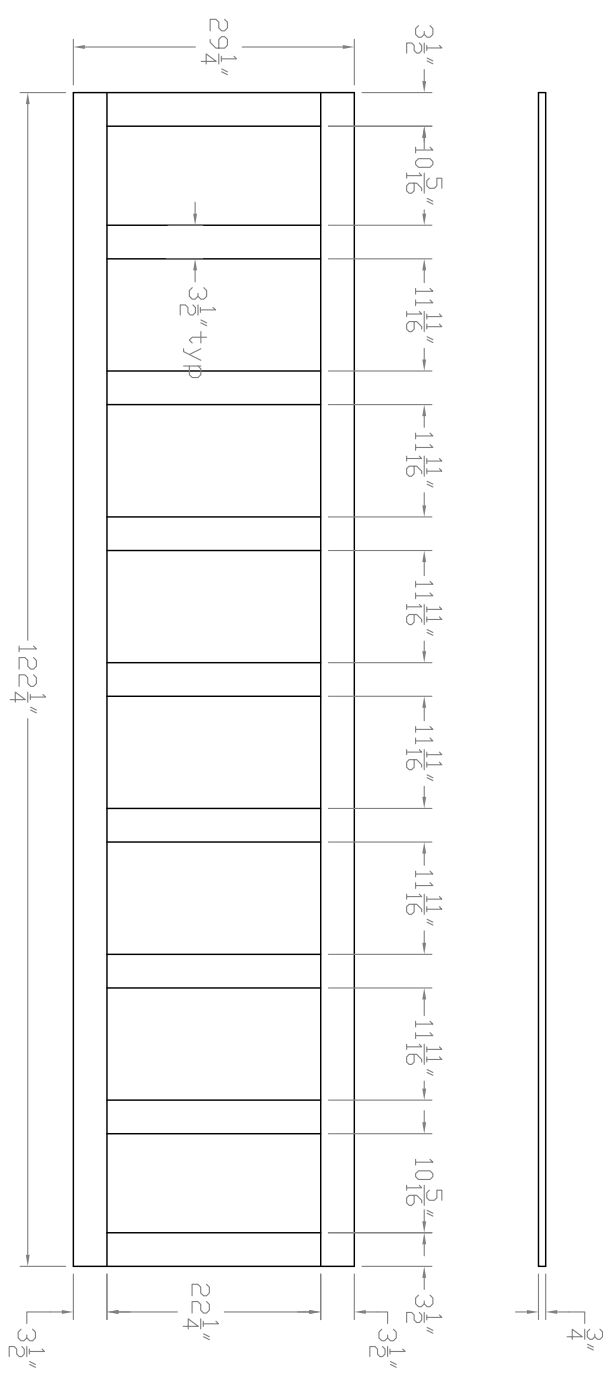
DATE: 9/28/18	DRAWN BY: BPT	SHEET: 3 of 8
SCALE: 1:20	REV	REV BY:
DRAWING #: Bertolini	REV DATE:	THIS DRAWING IS PROPERTY OF BAIRD BROTHERS SAWMILL INC.

Line Item(s): ?

Qty: 1

Baird Bros.
3/4" Cherry Faceplate

Note: 3/4" Thick Faceplate For Bottom Unit.



Baird Brothers Fine Hardwoods
 Baird Brothers Sawmill Inc. www.BairdBrothers.com
 7060 Croy Rd. Canfield, OH 44406
 (330) 533-3122 (800) 732-1697

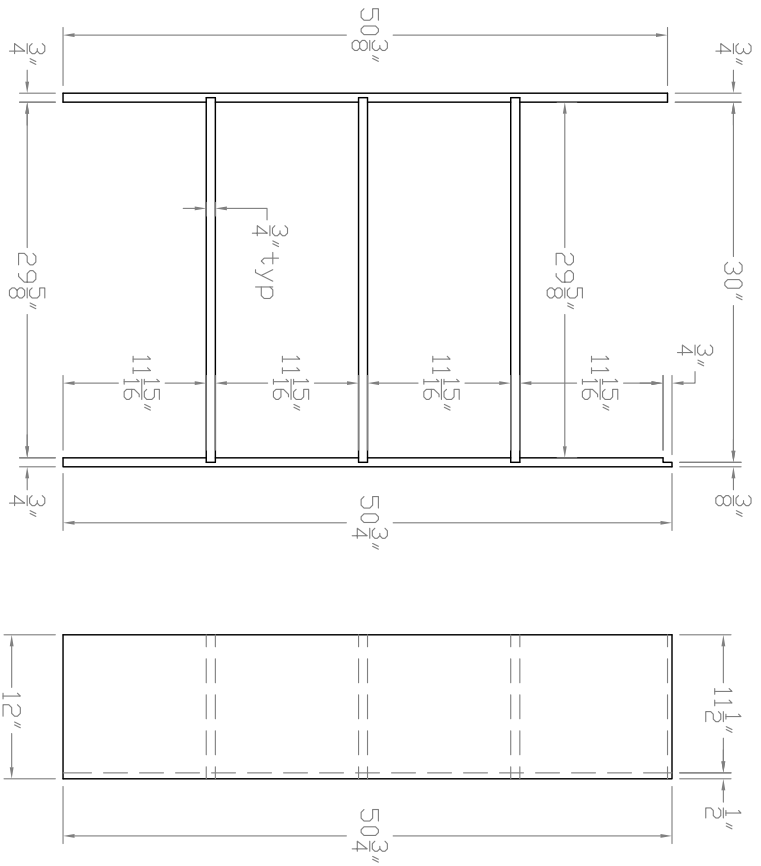
DATE:	9/28/18	DRAWN BY:	BPT	SHEET:	4 of 8
SCALE:	1:20	REV	REV DATE:	REV BY:	
DRAWING #:	Bertolini				THIS DRAWING IS PROPERTY OF BAIRD BROTHERS SAWMILL INC.

Line Item(s): ?

Qty: 2

Baird Bros.
Cherry Side Sections

- Notes:
- (2) Side Units.
 - 3/4" Cherry S4S.
 - 3/4" Wide x 3/8" Deep Dado Construction.
 - Rabbet Back Side For 1/2" Back Plate.
 - 1/2" x 30-3/8" x 50-3/8" Cherry Backplate (3/8"W x 1/2" Deep Rabbet).
 - See Pg.6 For Faceplate.



Baird Brothers Fine Hardwoods
 Baird Brothers Sawmill Inc. www.BairdBrothers.com
 7060 Croy Rd. Canfield, OH 44406
 (330) 533-3122 (800) 732-1697

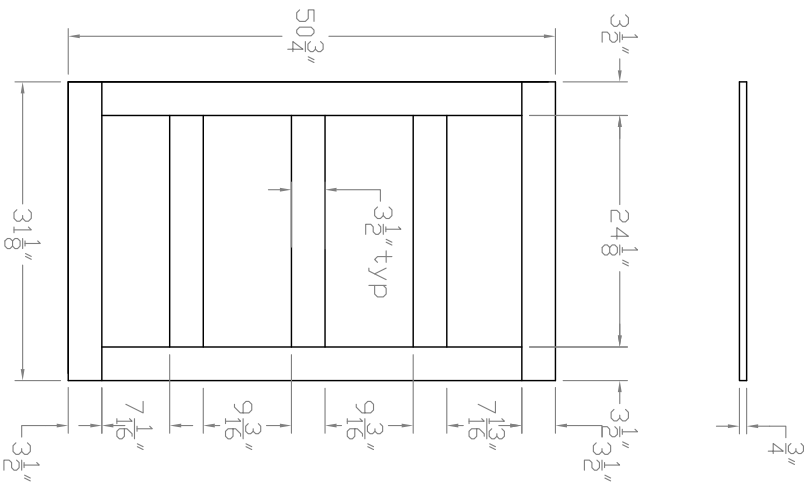
DATE:	9/28/18	DRAWN BY:	BPT	SHEET:	5 of 8
SCALE:	1:16	REV		REV BY:	
DRAWING #:	Bertolini		THIS DRAWING IS PROPERTY OF BAIRD BROTHERS SAWMILL INC.		

Line Item(s): ?

Qty: 2

Baird Bros.
3/4" Cherry Faceplates

Note: 3/4" Thick Faceplates For Side Units.



Baird Brothers Fine Hardwoods
 Baird Brothers Sawmill Inc. www.BairdBrothers.com
 7060 Croy Rd. Canfield, OH 44406
 (330) 533-3122 (800) 732-1697

DATE: 9/28/18 DRAWN BY: BPT SHEET: 6 of 8

SCALE: 1:20 REV REV DATE REV BY:

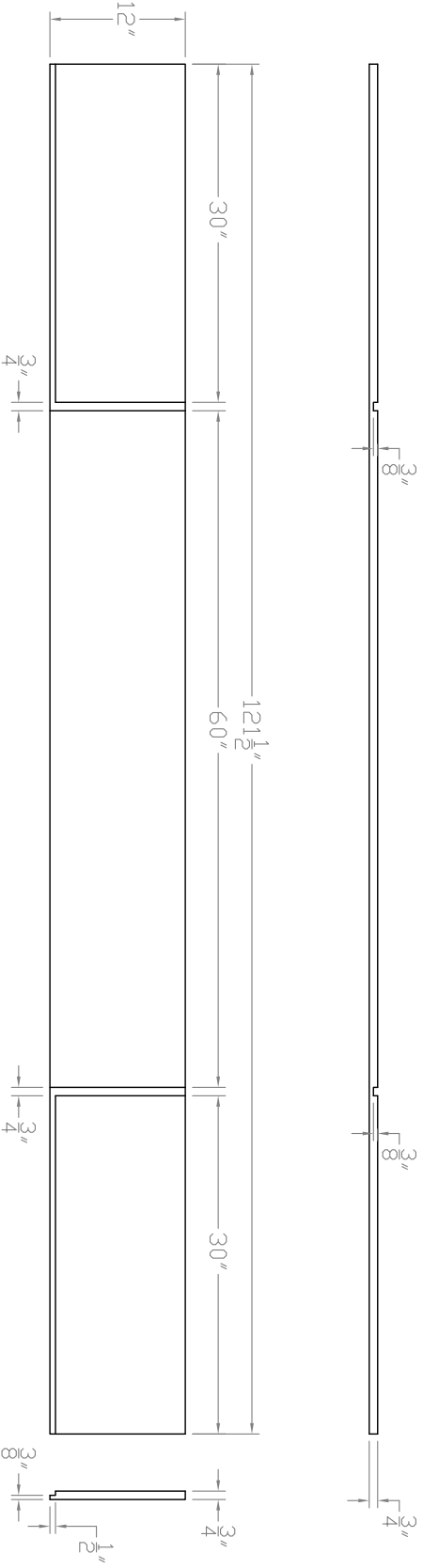
DRAWING # Bertolini THIS DRAWING IS PROPERTY OF BAIRD BROTHERS SAWMILL INC.

Line Item(s): ?

Qty: 2

Baird Bros.
3/4" Cherry S4S Top Plate

- Notes:
- (1) Top Plate.
 - 3/4" Cherry S4S.
 - 3/4" Wide x 3/8" Deep Dado Construction.
 - Rabbet Back Side For 1/2" Back Plate.
 - No Back Plate Behind Opening For TV.



Baird Brothers Fine Hardwoods
 Baird Brothers Sawmill Inc. www.BairdBrothers.com
 7060 Croy Rd. Canfield, OH 44406
 (330) 533-3122 (800) 732-1697

DATE: 9/28/18	DRAWN BY: BPT	SHEET: 7 of 8
SCALE: 1:16	REV	REV DATE
DRAWING #: Bertolini	REV BY:	REV BY:

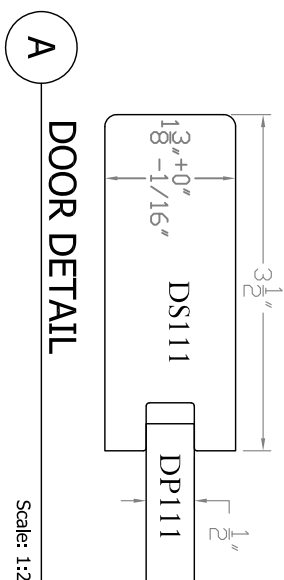
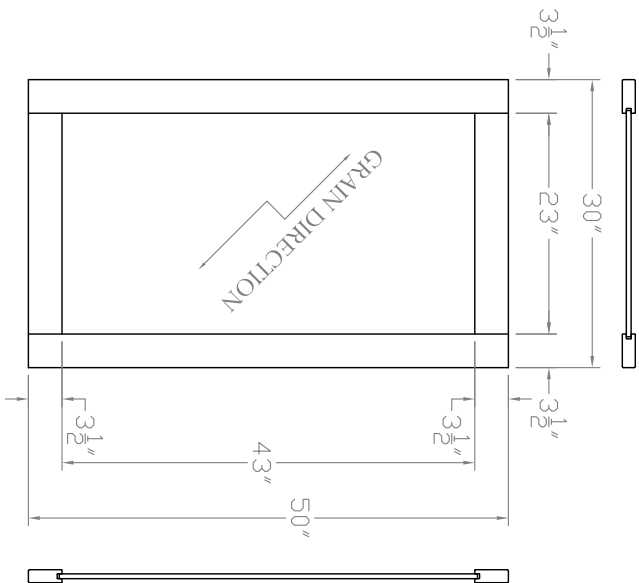
THIS DRAWING IS PROPERTY OF
BAIRD BROTHERS SAWMILL INC.

Line Item(s): ?

Qty: 2

Baird Bros.
Int. Custom BB1000 Shaker
Style Cherry Solid Wood Doors

- Notes:
- Grain Direction @ 45° .
 - To Be Hung With Unknown Track.
 - Finished Size Of Door May Need Adjusted To Fit Opening & Hardware.



Baird Brothers Fine Hardwoods
 Baird Brothers Sawmill Inc. www.BairdBrothers.com
 7060 Croy Rd. Canfield, OH 44406
 (330) 533-3122 (800) 732-1697

DATE: 9/28/18	DRAWN BY: BPT	SHEET: 8 of 8
SCALE: 1:10	REV	REV BY:
DRAWING #: Bertolini	REV DATE:	THIS DRAWING IS PROPERTY OF BAIRD BROTHERS SAWMILL INC.